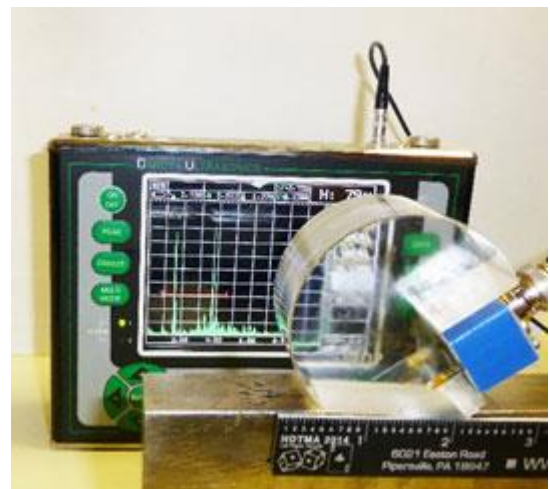
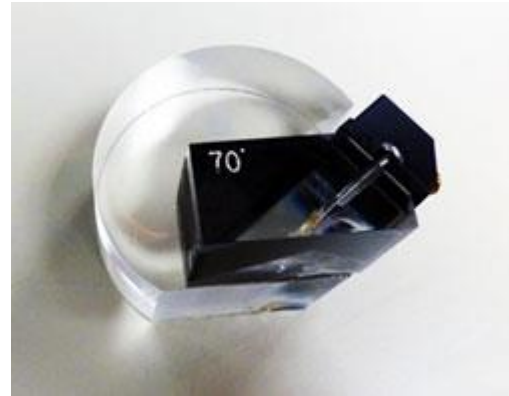
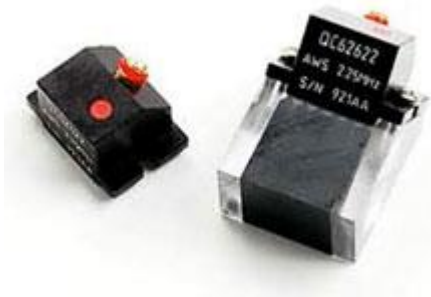


NDT AWS Prove Up Probes



AWS-QCA Prove-Up probes meet AWS requirements while drastically reducing the size of the wedge, allowing the probe to come closer to the edge of the weld and permitting better access in areas of limited access.

Compare the traditional 70° Snail Wedge to the AWS-QCA, the distance between the Beam Exit Point and the front edge of the probe is reduced by 0.5". Looking at the 0.060 Sensitivity Bore Hole in the IIW Block, the surface distance increases from 1/2" to a full 1". This is a significant improvement in approach distance.



QCA Prove-Up probes are ideal for jobs with limited access, curved surfaces and AWS prove-up. The 2.25 MHz $\frac{5}{8}$ " x $\frac{5}{8}$ " QCA probes meet all AWS Criteria for:

- Size
- Frequency
- Approach Distance
- Internal Ringing

Also available in MHz and 5 MHz

Special Order:

- Radius – specify Axial or Radial and Diameter
- Non-standard angles
- Material other than steel